

POWERSCAN D8590

The **POWERSCAN D8590** is an ultrahigh performance handheld imager for Direct Part Mark reading.

Thanks to a perfect combination of the embedded multiple lighting system and the aggressive DPM decoding algorithms, the **POWERSCAN D8590** easily reads any challenging Direct Part Mark codes (DPM).

The embedded multiple axis illuminator - low angle and dome - and the dynamic automatic lighting control enable a robust reading with the toughest DPMs, on flat, shiny, curved surfaces or dot peening codes.

The high processing speed allows the **POWERSCAN D8590** a very fast decoding, for the maximum operator productivity.

POWERSCAN D8590 is extremely easy to use. The reader integrates an aiming system for simple point-and-click targeting and the reading acknowledge is intuitive thanks to the audible, vibrator, and multipurpose visual user systems.

Easy connectivity and portability are ensured with direct, single USB power connection; no additional accessories required.

The ruggedized design permits reliable operations in the long term.



IDENTIFICATION

HIGHLIGHTS

- Multi-axis Illumination - low angle and dome - creates an even illumination for a really robust reading with the toughest DPMs
- Aggressive Decoding, to read any kind of DPM code
- Industrial, rugged design to resist to repeated shocks and usage, guaranteeing reliable operations in the long term
- Embedded USB. No additional power connection is required
- Vibrating Motor Built for noisy industrial environments
- 2-Years Warranty

APPLICATIONS

- **Automotive**
 - Assembly lines
 - Part traceability
 - Process control
 - Open loop track warranty
- **Electronics**
 - Part traceability
 - Assembly/Validation tracking
 - Open loop track logistic
- **Healthcare**
 - Code validation after marking
 - Surgical tool traceability



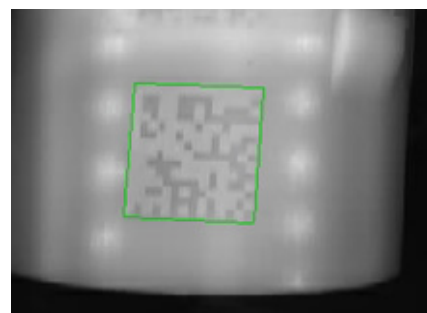
TECHNICAL DATA

PHYSICAL CHARACTERISTICS		
DIMENSIONS	Height:	180 mm (7")
	Width:	63 mm (2.5")
	Depth:	114 mm (4.5")
TEMPERATURE	Operating:	0° to 50° C (32° to 122° F)
	Storage:	-20° to 65° C (-4° to 150° F)
WEIGHT	204 g (7.2 oz.), not including cable	
HUMIDITY (NON-CONDENSING)	5% to 95%	
DROP RESISTANCE	Withstands over 50 drops of 6' (1.8 meters) to concrete	

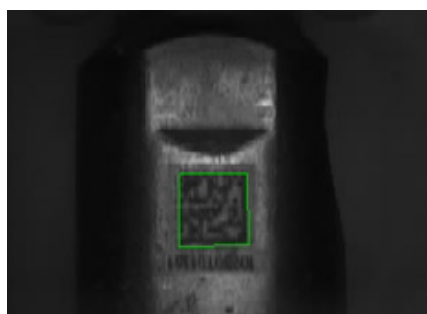
PERFORMANCE		
LIGHT SOURCE	Combination dome and dark field illumination system	
	Dome:	Two color, 630 nm (Red) and 470 nm (Blue)
	Dark Field:	Quadrant 30°, 630 nm (Red)
READING ANGLE	Pitch:	±30° (front to back)
	Skew:	±30°
	Rotational Tolerance:	±180°
TYPICAL DEPTH OF FIELD	0 to 2" (0 to 50.8 mm)	
AMBIENT LIGHT	Sunlight: Up to 9,000 ft-candles/96,890 lux	
IMAGER SENSOR	1280 x 1024 high resolution CMOS	
IMAGE OUTPUT FORMAT	JPEG, TIFF	
2D CODES	Data Matrix, QR Code, Micro QR Code	
STACKED CODES	PDF417, GS1 Databar (Composite & Stacked)	
1D / LINEAR CODES	Code 39, Code 128, I2 of 5, UPC/EAN, Codabar, Code 93, BC 412	
READING INDICATORS	Vibration motor, audible tones, visual feedback with multi-color LED, blue line targeting pattern	

ELECTRICAL CHARACTERISTICS	
INPUT VOLTAGE	5 VDC
CURRENT	Typical: 408mA Peak: 500mA Idle: 285mA
INTERFACES	USB, RS-232

MODELS & ACCESSORIES		
	P/N	Description
MODELS	PD8590-DPM	Powerscan D8590 Direct Part Mark
	93A050063	CAB-543 PD8590-DPM 12' TO CBX 10-30VDC
ACCESSORIES	CAB-532-KUS	Kit, RS232 8' coiled, US power supply
	CAB-532-KEU	Kit, RS232 8' coiled, EU power supply
	CAB-532-KUK	Kit, RS232 8' coiled, UK power supply
	CAB-532	Cable, 8' coiled, RS-232 interface
	CAB-533	Cable, 6' straight, USB interface
	CAB-534	Cable, 12' straight, USB interface



Very low marking contrast



Poor marking quality - noisy background



Very high code resolution



Dot Peen marking



Product and Company names and logos referenced may be either trademarks or registered trademarks of their respective companies. We reserve the right to make modifications and improvements.